

Instructions

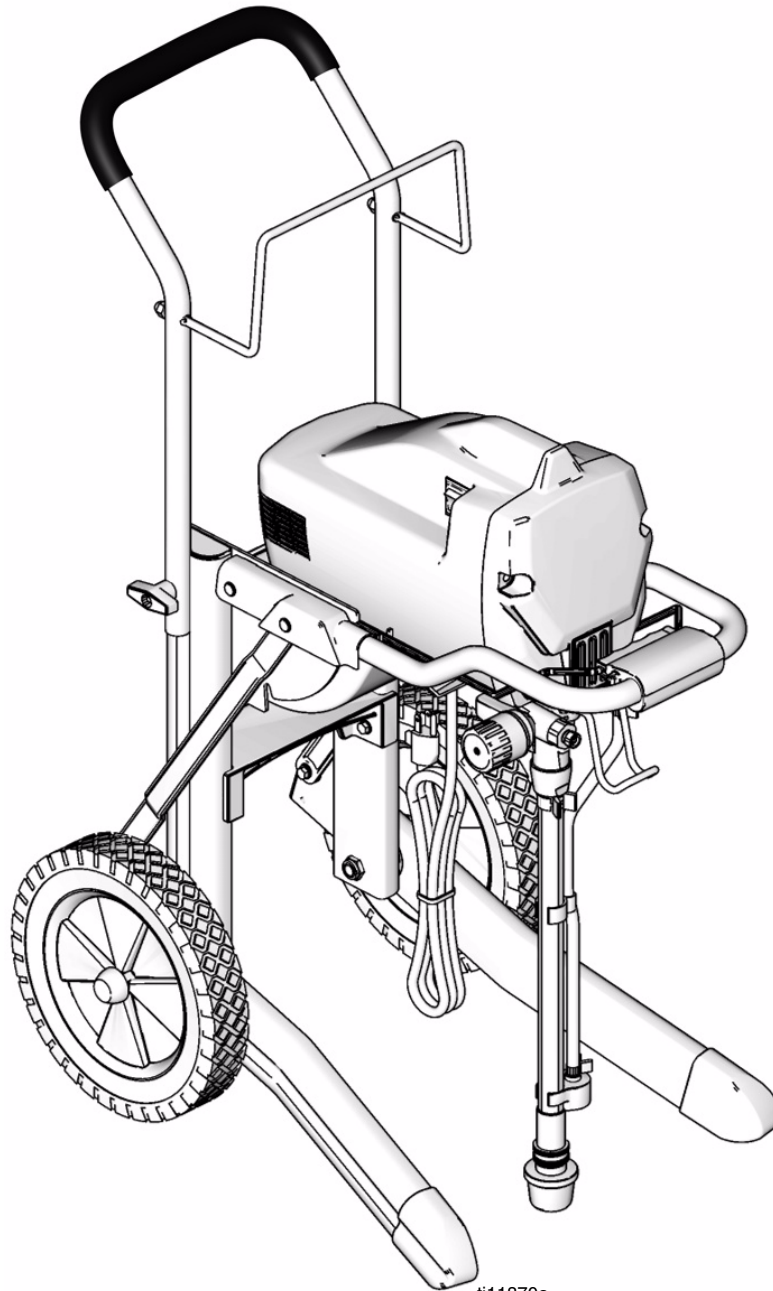


Important Safety Instructions

Read all warnings and instructions in this manual and in the sprayer operation manual. Save these instructions.

Lacquer Conversion Kit 256212

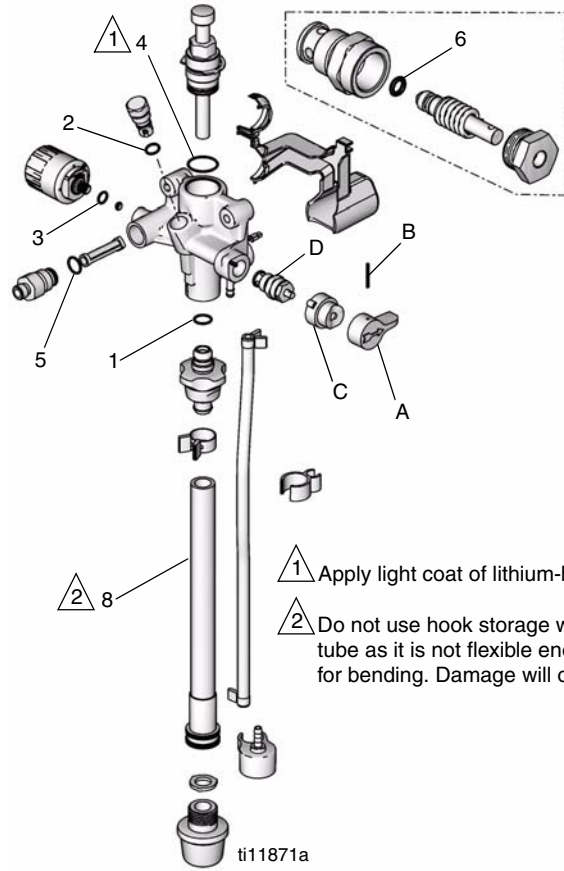
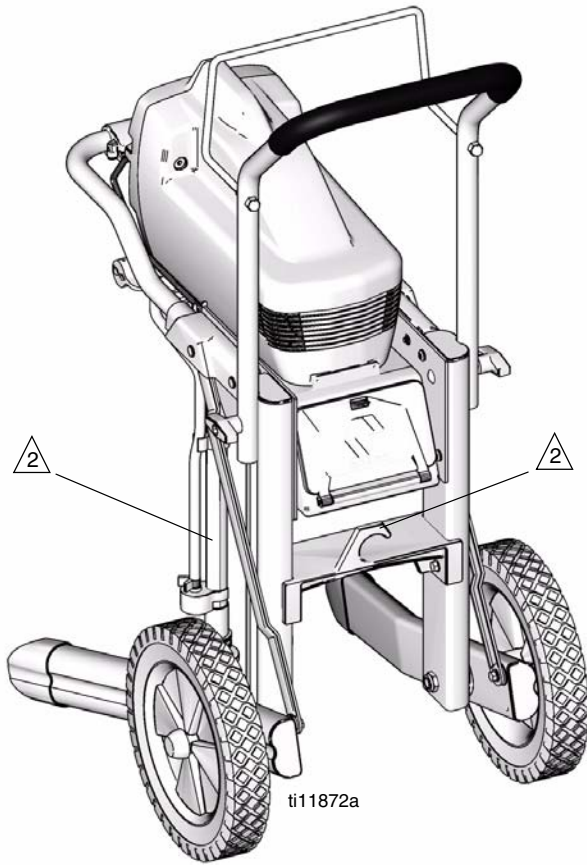
312933A



ti11870a

Lacquer Conversion Kit 256212

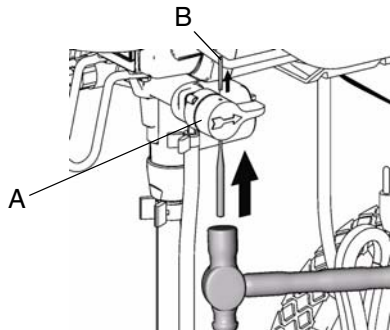
Ref.	Part No.	Description	Qty.
1	117559	O-RING, CV-75, size 020	1
2	111507	O-RING, CV-75, size 013	1
3	111316	O-RING, CV-75, size 012	1
4	15D370	O-RING, CV-75, size 022	1
5	15D371	O-RING, CV-75, size 015	1
6	15D252	O-RING, CV-90, size 008	1
7	119400	SEALANT, pipe, sst	1
8	15D883	TUBE, suction	1



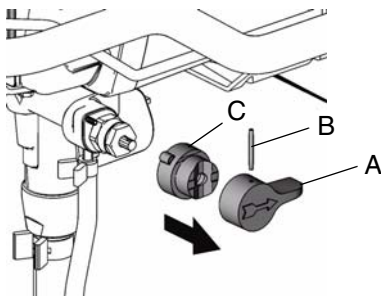
- 1 Apply light coat of lithium-based grease
- 2 Do not use hook storage with new suction tube as it is not flexible enough to allow for bending. Damage will occur.

Instructions

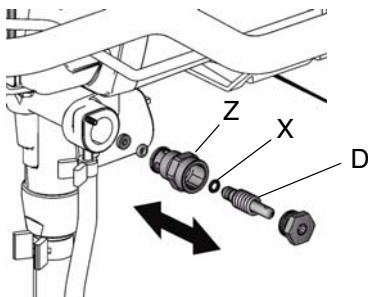
1. To relieve pressure:
 - a. Turn power switch to OFF.
 - b. Unplug sprayer.
 - c. Turn knob (A) down to PRIME/DRAIN.
 - d. Hold metal part of gun firmly to a grounded metal pail. Pull gun trigger to relieve pressure.
2. Turn knob (A) up to SPRAY position.
3. Remove pin (B) with pin punch and hammer.



4. Remove knob (A) and base (C).

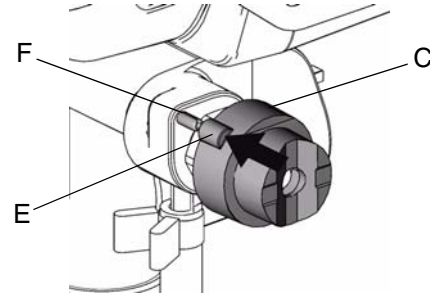


5. Remove valve stem (D) from manifold. Be sure gasket (X) and seat (Z) do not stay in manifold.

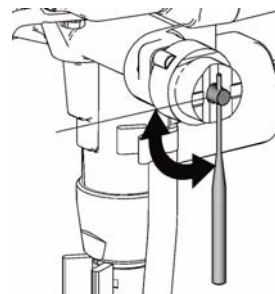


6. Replace brown o-ring (6) on end of valve stem. Apply sealant (7) to valve threads. Install valve stem in pump manifold. Torque to 185 in-lb (21 N•m).

7. Install base (C) on valve, aligning pin (E) on base (C) with hole (F) on manifold.



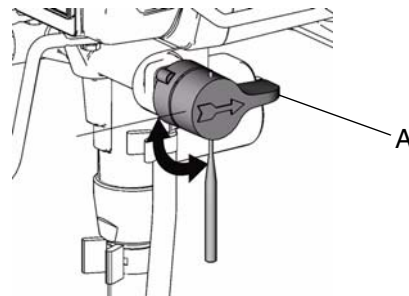
8. Rotate valve stem with a pin punch until hole is perpendicular.



9. Install knob (A) over base (C).

10. Place knob in SPRAY position.

11. Insert end of pin punch through hole in knob (A), to make sure knob and valve stem are aligned.



12. Install pin (B) through hole in knob (A). Tap pin through knob with hammer. End of pin will be flush with top of hole in knob when correctly installed.

*All written and visual data contained in this document reflects the latest product information available at the time of publication.
Graco reserves the right to make changes at any time without notice.*

This manual contains English. MM 312933

Graco Headquarters: Minneapolis

International Offices: Belgium, China, Japan, Korea

GRACO INC. P.O. BOX 1441 MINNEAPOLIS, MN 55440-1441

Copyright 2008, Graco Inc. is registered to I.S. EN ISO 9001

www.graco.com

Copyright 03/2008