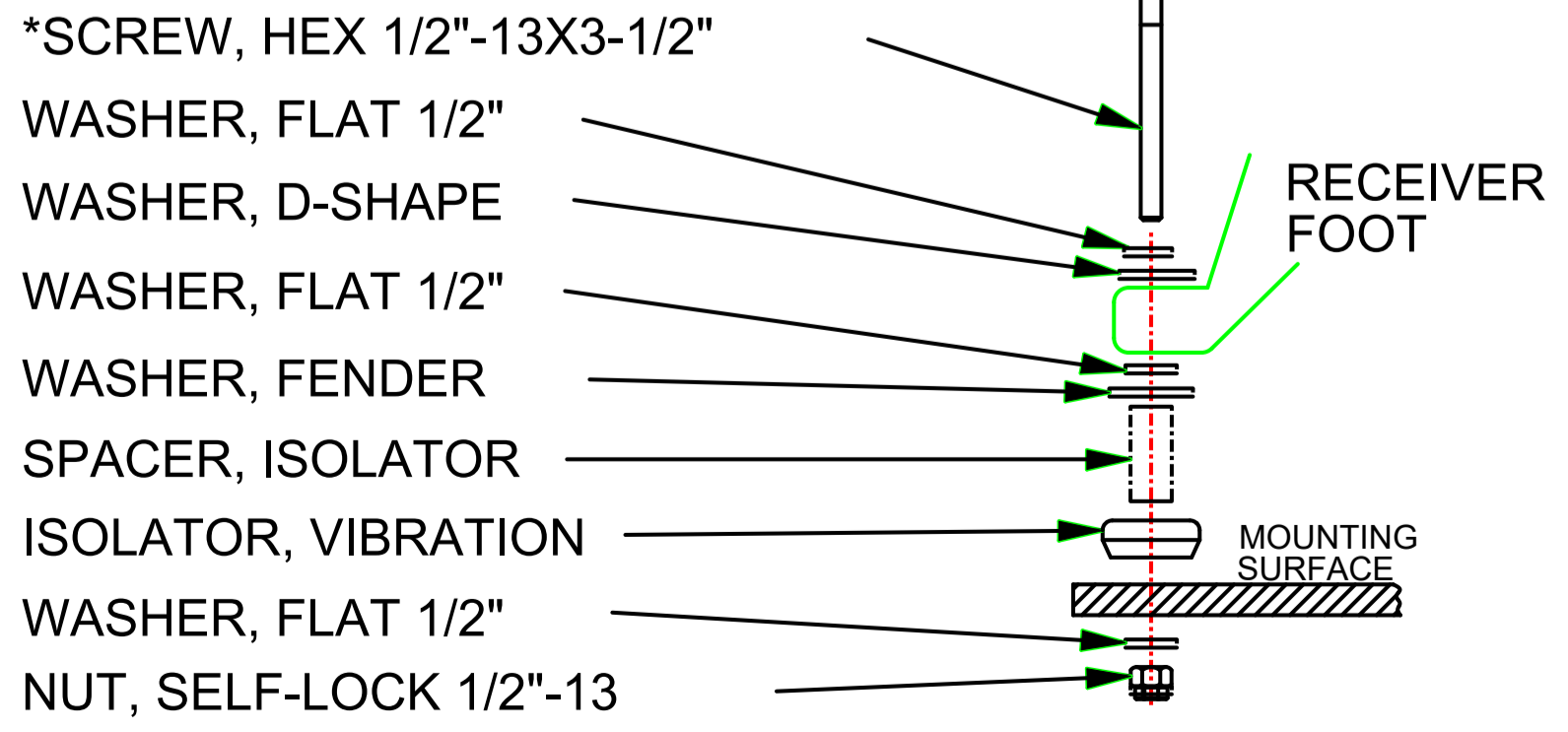
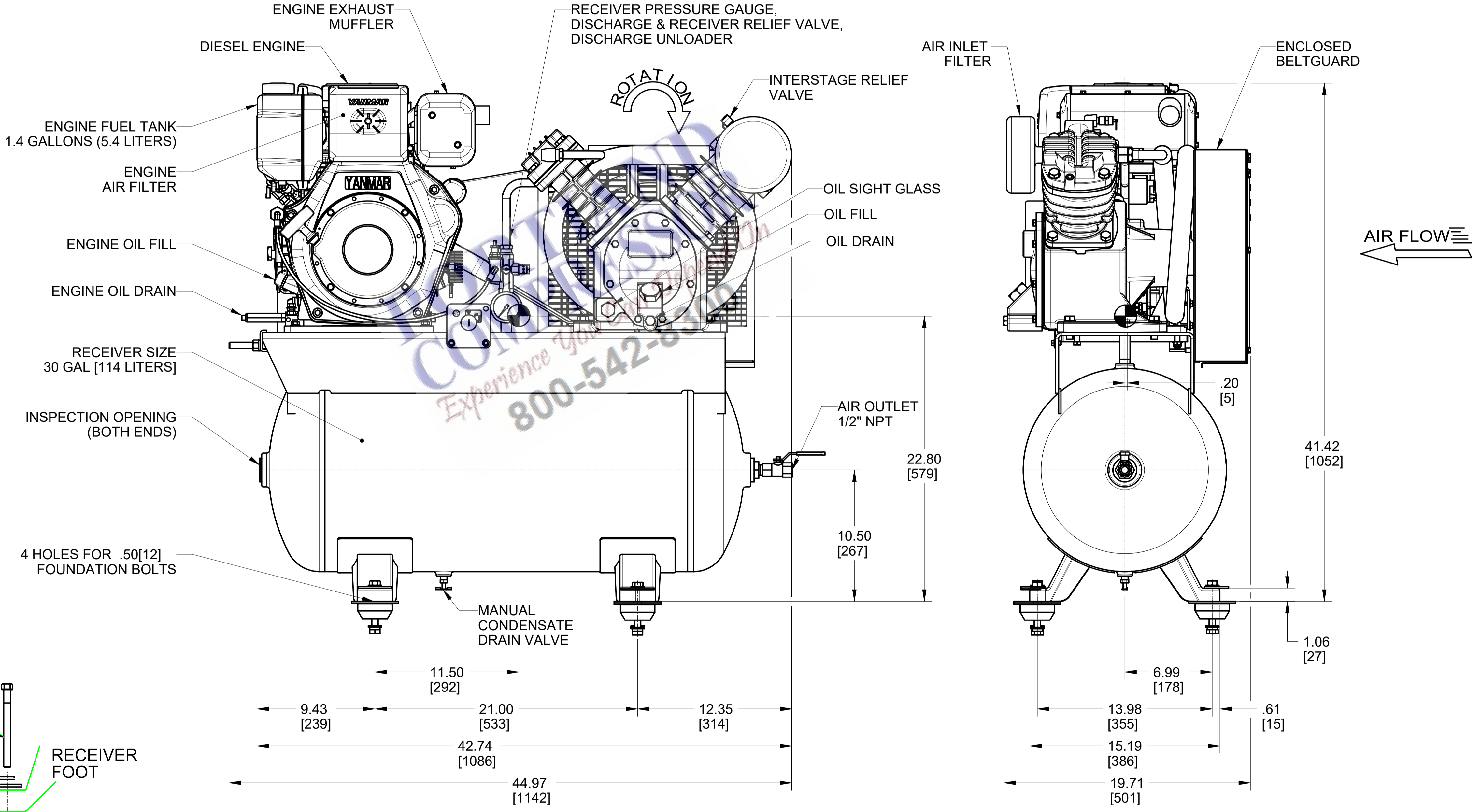


REVISIONS			DATE	DRAWN	APPROVED
ZONE	REV	ECN	DESCRIPTION		
A		1408034	ORIGINAL RELEASE	2020DEC02	A.DHANANJAYA M.GROSS

- NOTES:
- FOUNDATION OR FLOOR MUST BE LEVEL AND SUPPORT ALL FEET EQUALLY; IF NECESSARY SHIM OR GROUT THE FOURTH FOOT.
 - FOUNDATION BOLTS SHOULD PROJECT THRU NUTS AT LEAST 1/2"[13] TO ALLOW FOR LEVELING.
 - ALLOW AT LEAST 12.00[305] CLEARANCE MIN. ON ALL SIDES FOR PROPER AIR CIRCULATION.
 - DRY WEIGHT: APPROX. 535 LBS [243 KG].
 - COMPRESSOR UNIT TO BE PROPERLY MOUNTED TO SOLID SURFACE USING MOUNTING KIT SUPPLIED. FOR MOUNTING TO CONCRETE FLOORS USE 1/2" CONCRETE ANCHORS (NOT SUPPLIED) IN PLACE OF *1/2" X 3 1/2" HEX SCREW.



TRUCK BED MOUNTING OF VIBRATION ISOLATOR KIT ASSEMBLY

GENERAL ARRANGEMENT TOLERANCES ALL DIMENSIONS ARE IN INCHES [MILLIMETERS (IF SHOWN)] UNSPECIFIED TOLERANCES: XXX = ± .12[3] XX = ± .25[6] X = ± .50[13]	WARNING: THE EXPORT OR REEXPORT OF THIS DRAWING OR A PRODUCT PRODUCED BY THIS DRAWING IS SUBJECT TO U.S. EXPORT ADMINISTRATION REGULATIONS & OTHER APPLICABLE GOVERNMENT RESTRICTIONS OR REGULATIONS. COMPANY: INGERSOLL RAND PROPRIETARY NOTICE: THIS DRAWING CONTAINS CONFIDENTIAL AND TRADE SECRET INFORMATION. IS THE PROPERTY OF THE COMPANY, AND IS GIVEN TO THE RECEIVER IN CONFIDENCE. THE RECEIVER BY RECEPTION AND RETENTION OF THE DRAWING ACCEPTS THE DRAWING IN CONFIDENCE AND AGREES THAT, EXCEPT AS AUTHORIZED IN WRITING BY THE COMPANY, IT WILL (1) NOT USE THE DRAWING OR ANY COPY THEREOF OR THE CONFIDENTIAL OR TRADE SECRET INFORMATION THEREIN; (2) NOT COPY THE DRAWING; (3) NOT DISCLOSE TO OTHERS EITHER THE DRAWING OR THE CONFIDENTIAL OR TRADE SECRET INFORMATION THEREIN; AND (4) UPON COMPLETION OF THE NEED TO RETAIN THE DRAWING, OR UPON DEMAND, RETURN THE DRAWING, ALL COPIES THEREOF, AND ALL MATERIAL COPIED THEREFROM.	DO NOT SCALE DRAWING DRAWING CONFORMS TO ASME CAD GENERATED DRAWING. NO MANUAL REVISIONS ALLOWED UNLESS OTHERWISE SPECIFIED: - REMOVE ALL BURRS AND SHARP CORNERS - WELD SYMBOLS TO BE IN ACCORDANCE WITH ANSI/AWS A2.4 COPYRIGHT © 2020 ALL RIGHTS RESERVED INGERSOLL RAND	THIRD ANGLE PROJECTION DRAWN: A.DHANANJAYA DATE: 2020DEC02 CHECKED: M.GROSS DATE: 2020DEC02 APPROVED: M.GROSS DATE: 2020DEC02		
			NAME: GENERAL ARRANGEMENT, 2475F10DY YANMAR SIZE: A1 ESTIMATED WEIGHT (NO UNLESS OTHERWISE SPECIFIED): 47719422 001 REVISION: A SCALE: 0.20 MODEL: 2475F10DY SHEET: 1 of 1		