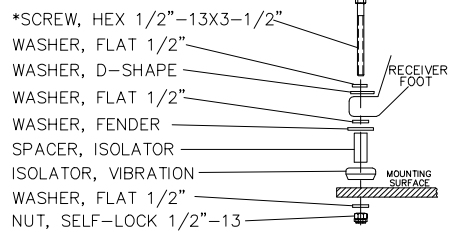
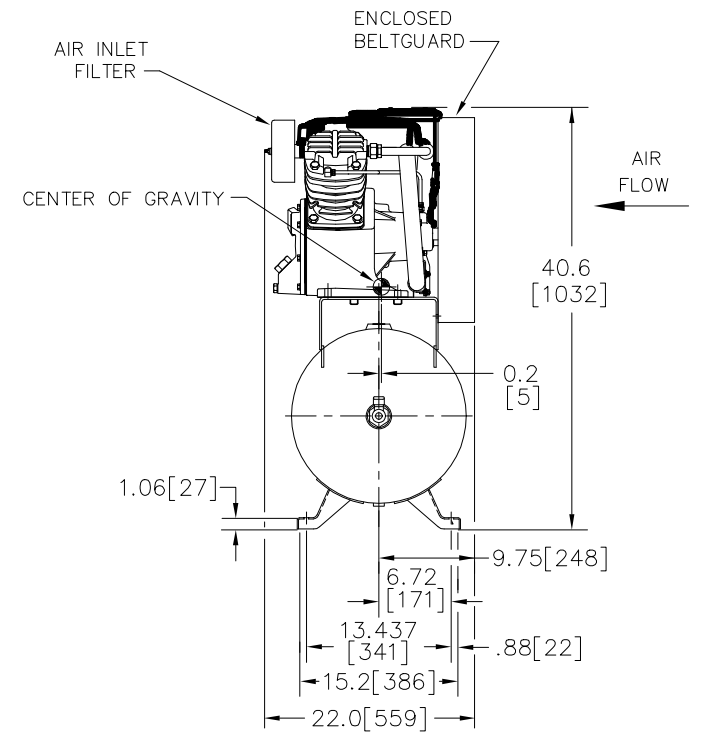
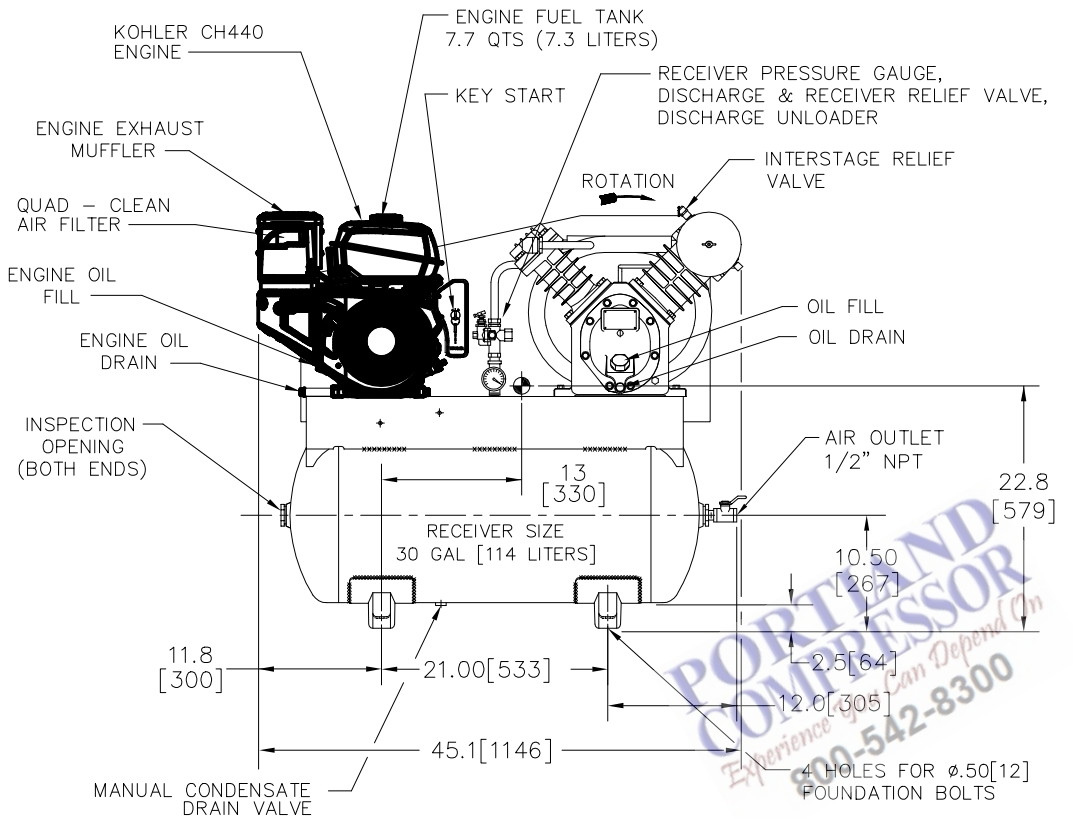


ZONE		REV	FCN	DESCRIPTION	DATE	DRAWN	APPD
A	10R00299			INITIAL RELEASE	2010JUN23	G.Tungate	J.Smith
B	10R00669			RE-DIRECTED DISCHARGE LINE	2010NOV09	G.Levi	J.Smith
C	ITS103291			UPDATED RECEIVER & ADDED THE VIBRATION ISOLATOR KIT ASSEMBLY ILLUSTRATION	2011AUG10	G.Levi	J.Smith
D	ITS104103			REVISED PLACEMENT OF WASHERS OF ISOLATOR KIT ASSEMBLY.	2012JUL10	C.Coffey	J.Smith



NOTES:

- FOUNDATION OR FLOOR MUST BE LEVEL AND SUPPORT ALL FEET EQUALLY; IF NECESSARY SHIM OR GROUT THE FOURTH FOOT.
- FOUNDATION BOLTS SHOULD PROJECT THRU NUTS AT LEAST 1/2" [13] TO ALLOW FOR LEVELING.
- ALLOW AT LEAST 12.00 [305] CLEARANCE MIN. ON ALL SIDES FOR PROPER AIR CIRCULATION.
- ALL UNSPECIFIED TOLERANCES: XXX =  $\pm$ .12 [3]  
XX =  $\pm$ .25 [6]  
X =  $\pm$ .50 [13]
- DIMENSIONS IN [ ] ARE MILLIMETER DIMENSIONS UNLESS OTHERWISE SPECIFIED.
- DRY WEIGHT: APPROX. 455 LBS [206 KG]
- COMPRESSOR UNIT TO BE PROPERLY MOUNTED TO SOLID SURFACE USING MOUNTING KIT SUPPLIED. FOR MOUNTING TO CONCRETE FLOORS USE 1/2" CONCRETE ANCHORS (NOT SUPPLIED) IN PLACE OF \*1/2" X 3 1/2" HEX SCREW.

TRUCK BED MOUNTING OF VIBRATION ISOLATOR KIT ASSEMBLY

DRAWING IN INCHES [METRIC]

APPROVED FOR:	SIZE:	JOB:	SPEC:
IR ORDER NO.	MODEL:	ITEM:	CONTRACTOR:
CUSTOMER:	PISTON DISPLACEMENT cfm (m3/min):	ARCH. ENGR.:	
	SPEED rpm:		
	DISCHARGE PRESSURE RATING psig (kPa):		
CUSTOMER ORDER NO.	ACTUAL DELIVERY cfm (m3/min):		
PER:	REGULATION:		

COPYRIGHT 2009 INGERSOLL RAND		WARNING: THE REPORT OR REPORT OF THIS DRAWING OR A PRODUCT PRODUCED BY THE DRAWING IS SUBJECT TO U.S. EXPORT ADMINISTRATION REGULATIONS AND OTHER APPLICABLE GOVERNMENT RESTRICTIONS OR REGULATIONS.	
PROPRIETARY NOTICE			
THIS DRAWING CONTAINS CONFIDENTIAL AND TRADE SECRET INFORMATION IS THE PROPERTY OF INGERSOLL-RAND CO. AND IS GIVEN TO THE RECEIVER IN CONFIDENCE. THE RECEIVER BY ACCEPTANCE AND RETENTION OF THIS DRAWING ACCEPTS THE CONFIDENTIALITY AND AGREES THAT, EXCEPT AS AUTHORIZED IN WRITING BY INGERSOLL-RAND CO. IT SHALL NOT USE THE DRAWING OR ANY COPY THEREOF OR THE CONFIDENTIAL OR TRADE SECRET INFORMATION THEREIN; (2) NOT COPY THE DRAWING; (3) NOT DISCLOSE TO OTHERS EITHER THE DRAWING OR THE CONFIDENTIAL OR TRADE SECRET INFORMATION THEREIN; AND (4) UPON COMPLETION OF THE NEED TO RETAIN THE DRAWING, OR UPON DEMAND, RETURN THE DRAWING, ALL COPIES THEREOF, AND ALL MATERIAL COPIED THEREFROM.			
DRAWN:	G.Tungate	DATE:	2010JUN09
CHECKED:	J.Smith	DATE:	2010JUN09
APPROVED:	J.Ballard	DATE:	2010JUN09

**IR Ingersoll Rand**

**GENERAL ARRANGEMENT**  
**2475F14G KOHLER**

SIZE:	A1	SCALE:	NONE	DATE:	2010JUN09	REV:	D
DESCRIPTION:	GENERAL ARRANGEMENT ABOVE		QTY:	46821468	DATE:		